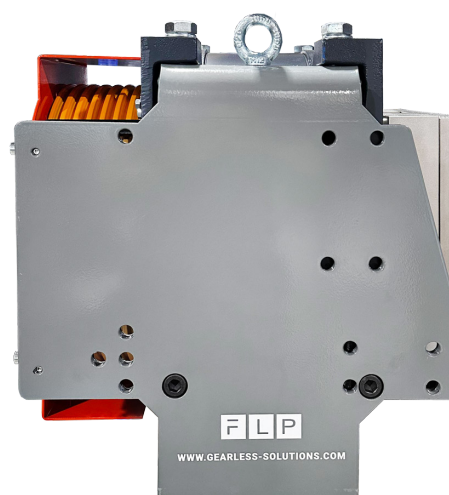


ELT 15

Replacement machine for ThyssenKrupp Evolution

Custom-fit replacement solution for type-tested elevators of the Evolution series with DAF210 from ThyssenKrupp. Precisely matched to the structural and mechanical conditions, our machines allow for a straightforward 1:1 replacement – without the need for complex modifications to the shaft, the console, or the drill holes.



Technical data

Encoder: ENDAT ERN1313

Protection class: IP40

Duty cycle: S5-50%

Brake: 207 VDC

Brake monitoring switch: Microswitch

Suitable for

Suitable for the DAF210M and DAF210L by ThyssenKrupp

- Specially matched output shaft, suspended between the beams just like the original machine
- Precisely fitting mounting plates and boreholes for exact installation
- Manufacturer-independent solution with UCM brake in accordance with the latest state of the art

Machine versions

ELT15 – 450.100

Load capacity: 450 kg
Rated speed: 1.0 m/s

ELT15 – 1000.100

Load capacity: 1000 kg
Rated speed: 1.0 m/s

ELT15 – 630.100

Load capacity: 630 kg
Rated speed: 1.0 m/s